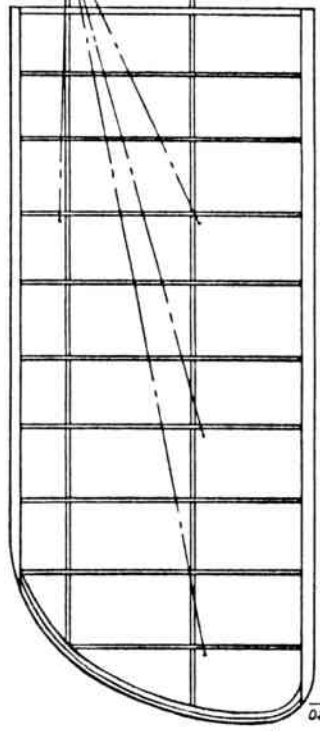
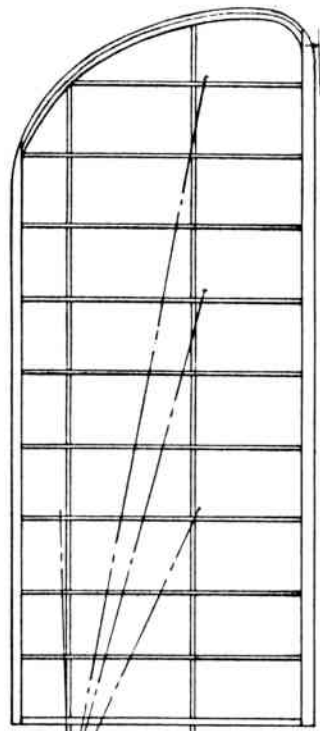
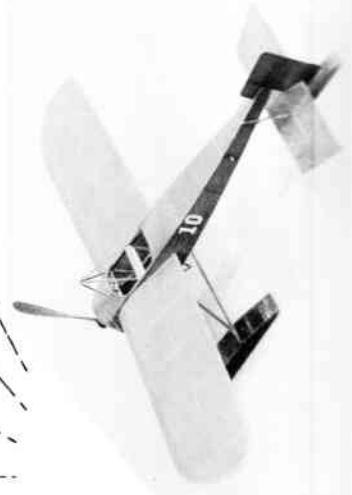
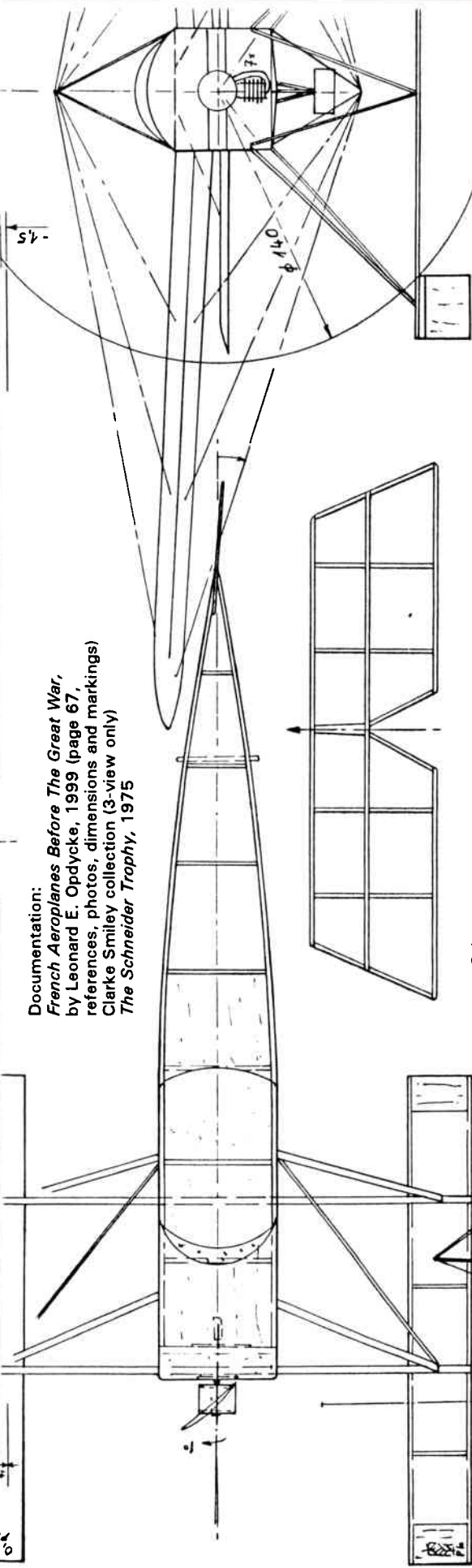




Alex Toth



Documentation:
French Aeroplanes Before The Great War,
by Leonard E. Opdycke, 1999 (page 67,
references, photos, dimensions and markings)
Clarke Smiley collection (3-view only)
The Schneider Trophy, 1975



Colors:
Entire aircraft: blue
Racing numbers 10 or 7 were white

1913 BOREL 2-SEAT HYDRO

Drawn by Lubomír Koutný 05/99

Successfully flown by M. Chemet, with an 80hp Gnome rotary engine, but when a heavier 100 hp Gnome was installed for the 1913 Monaco contest, the aircraft tipped forward in the water, precluding take-off! With the 80hp Gnome reinstalled, Chemet stalled the Borel after take-off, putting it out-of-action.

Koutný's model was built as a Peanut, but the plans are printed here in reduced size.